

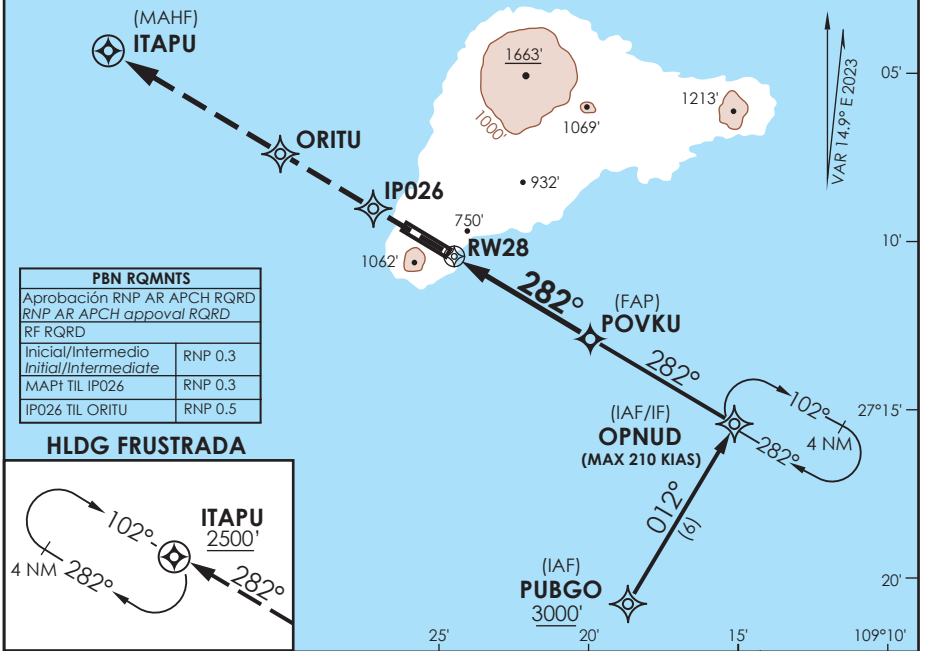
AP. MATAVERI
ISLA DE PASCUA - CHILE

SCIP IAC 9
RNP Z Rwy 28 (AR)

APP PASCUA Pascua Approach	127.3/118.1	TORRE PASCUA Pascua Tower	118.1	CONTROL TERRESTRE Ground Control	121.9
-------------------------------	-------------	------------------------------	-------	-------------------------------------	-------

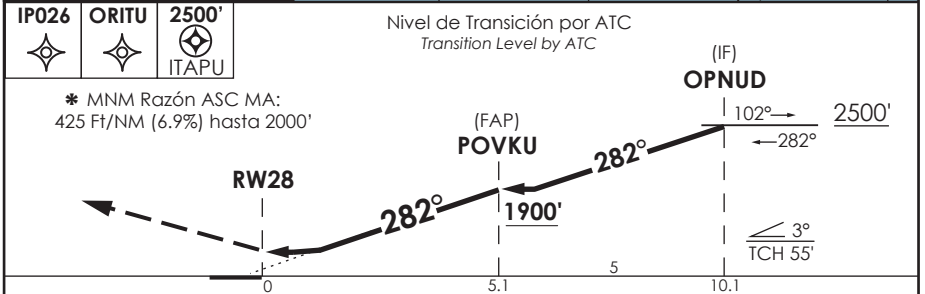
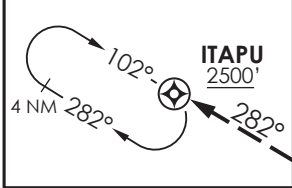
RNP	FINAL APCH CRS 282°	MNM ALT POVKU 1900'	DA (H) 640'(413')	AD Elev. THR 28 Elev. 227'	
------------	-------------------------------	-------------------------------	-----------------------------	--------------------------------------	--

APCH FRUSTRADA: ASC a 2500' vía IP026-ORITU-ITAPU, ingrese a HLDG 102° derecha o según autorización ATC.
 Missed Apch: Climb to 2500' via IP026-ORITU-ITAPU, enter HLDG 102° right or according to ATC clearance.



PBN RQMNTS	
Aprobación RNP AR APCH RQRD	
RNP AR APCH approval RQRD	
RF RQRD	
Inicial/Intermedio Initial/Intermediate	RNP 0.3
MAP1 TIL IPO26	RNP 0.3
IPO26 TIL ORITU	RNP 0.5

HLDG FRUSTRADA



C A T E G O R Í A	DIRECTO RWY 28 <i>Straight in RWY 28</i>	RNP AR RWY 28 SCIP: PROC NA BLW 0°C ó ABV 42°C.
	* RNP 0.3 DA 640' (413')	
	2.0 Km	

Veloc. Terrestre Kts	80	100	120	140	160	REQUIERE AUTORIZACION ESPECIAL PARA ACFT Y TRIPULACION SPECIAL ACFT AND AIRCREW AUTHORIZATION REQUIRED
Angulo DES 3.0° FPM	425'	531'	637'	743'	849'	
MAPt en RW28						

DASA / SECCION AIS-MAP